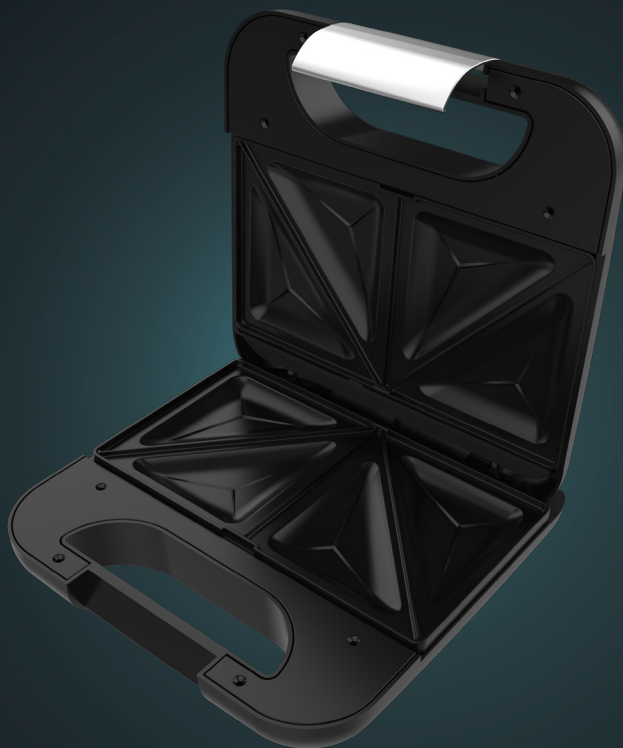


cecotec

ROCK'NTOAST CLASSIC +

Sandwichera/Sandwich maker



Manual de instrucciones
Instruction manual
Manuel d'instructions
Bedienungsanleitung
Manuale di istruzioni
Manual de instruções
Handleiding
Instrukcja obsługi
Návod k použití

Instrucciones de seguridad	4
Safety instructions	7
Instructions de sécurité	9
Sicherheitshinweise	12
Istruzioni di sicurezza	15
Instruções de segurança	18
Veiligheidsinstructies	20
Instrukcje bezpieczeństwa	23
Bezpečnostní pokyny	26

ÍNDICE

1. Piezas y componentes	28
2. Antes de usar	28
3. Funcionamiento	28
4. Limpieza y mantenimiento	29
5. Resolución de problemas	30
6. Especificaciones técnicas	30
7. Reciclaje de aparatos eléctricos y electrónicos	31
8. Garantía y SAT	31
9. Copyright	31

INDEX

1. Parts and components	32
2. Before use	32
3. Operation	32
4. Cleaning and maintenance	33
5. Troubleshooting	34
6. Technical specifications	34
7. Disposal of old electrical and electronic appliances	35
8. Technical support and warranty	35
9. Copyright	35

SOMMAIRE

1. Pièces et composants	36
2. Avant utilisation	36
3. Fonctionnement	36
4. Nettoyage et entretien	37
5. Résolution de problèmes	38
6. Spécifications techniques	39
7. Recyclage des équipements électriques et électroniques	39
8. Garantie et SAV	39
9. Copyright	39

INHALT

1. Teile und Komponenten	40
2. Vor dem Gebrauch	40
3. Bedienung	40
4. Reinigung und Wartung	41
5. Problembehebung	42
6. Technische Spezifikationen	43
7. Recycling von Elektro- und Elektronikgeräten	43
8. Garantie und Kundendienst	43
9. Copyright	44

INDICE

1. Parti e componenti	45
2. Prima dell'uso	45
3. Funzionamento	45
4. Pulizia e manutenzione	46
5. Risoluzione dei problemi	47
6. Specifiche tecniche	47
7. Riciclaggio di apparecchiature elettriche ed elettroniche	48
8. Garanzia e supporto tecnico	48
9. Copyright	48

ÍNDICE

1. Peças e componentes	49
2. Antes de usar	49
3. Funcionamento	49
4. Limpeza e manutenção	50
5. Resolução de problemas	51
6. Especificações técnicas	52
7. Reciclagem de produtos elétricos e eletrônicos	52
8. Garantia e SAT	52
9. Copyright	53

INHOUD

1. Onderdelen en componenten	54
2. Vóór u het apparaat gebruikt	54
3. Werking	54
4. Schoonmaak en onderhoud	55
5. Probleemoplossing	56
6. Technische specificaties	56
7. Recycling van elektrische en elektronische apparatuur	57
8. Garantie en technische ondersteuning	57
9. Copyright	57

1. PARTS AND COMPONENTS

Fig. 1

6. Hinged handle
7. Bottom plate
8. Top plate
9. Overheating indicator
10. High temperature indicator

NOTE:

the graphics in this manual are schematic representations and may not exactly match the device.

2. BEFORE USE

- This device is packaged in a way as to protect it during transport. Take the device out of its box and remove all packaging materials. You can keep the original box and other packaging elements in a safe place. This will help you prevent damage to the device when transporting it in the future. In case the original packaging is disposed of, make sure all packaging materials are recycled accordingly.
- Make sure all parts and components are included and in good conditions. If there is any piece missing or in bad conditions, contact the official Cecotec Technical Support Service immediately.
- Before the first use, wipe the plates with a damp cloth, a dry cloth with paper, then brush the plates with a little butter, margarine or cooking fat.

Box content

- Rock'nToast Grill + Sandwich Maker
- Instruction manual

3. OPERATION

- Plug the device to a power supply.
- Close the sandwich maker and, while it is preheating, prepare the food you wish to cook.
- Wait 3 minutes: the temperature indicator light will illuminate green, indicating the end of preheating.
- Open the sandwich maker and put a slice of bread in the bottom plate.
- Add the filling and top with another slice of bread. Close the sandwich maker loosely. Steam will escape through the opening between the plates during cooking. Keep hands away from hot surfaces and steam.

- If desired, lock the sandwich maker with the folding handle locking system by pressing it down when closing the appliance.

NOTE: during toasting, the thermostat indicator light will turn on and off, indicating that the appliance is being maintained at a suitable toasting temperature. Only cook with the sandwich maker closed, and never touch the hot areas of the appliance while the high temperature indicator is on.

- The sandwich will take 2 to 3 minutes to toast, as desired. Open the sandwich maker and remove the sandwich with the help of a plastic or wooden spatula. Never use metal utensils that could damage the non-stick coating of the plate.
- Close the sandwich maker to keep it warm while you prepare the next food you wish to toast.
- Please note that when the hot plates are hot, the heating indicator will light up to warn you and prevent burns.
- When you have finished using the sandwich maker, unplug it.

Recommendations for better roasting results

- Always preheat the appliance before use. Plug in the appliance and prepare the sandwich fillings.
- It is also possible to spread the bread with a little butter to give it more flavour and a crispier end result.

4. CLEANING AND MAINTENANCE

- Unplug the device and allow it to cool down before cleaning it.
- Wipe the inside and edges of the plate with kitchen paper or a soft cloth. If it is difficult to remove food residues stuck to the plate, pour a little cooking oil on the food residues to soften them and wipe the plate after 5 minutes.
- Clean the outside of the appliance only with a slightly damp cloth to prevent moisture, oil or grease from entering the ventilation slot.
- Do not clean the interior and exterior surface with abrasive pads or steel wool to avoid damaging the finish.
- Only use water to clean the appliance. Do not use any other chemical solution for cleaning.
- Do not immerse the appliance in water or other liquids.

5. TROUBLESHOOTING

Problem	Possible cause	Possible solution
The appliance does not work	The product is not plugged in.	Plug the appliance in.
The sandwich maker gives off a certain smell of smoke	There is too much food that has not been removed during previous cooking and is burning.	Wipe the surface with a damp cloth and remove food residues.
	You are preparing greasy ingredients.	When greasy food is cooked, a large amount of oil will leak into the container. Cooking oil causes white smoke to come out of the device and it gets hotter than normal. This does not affect the device or the result.
The ingredients are cooked unevenly in the air fryer	The preparation time is not enough.	Leave the sandwich in the sandwich maker for a longer period of time.
Fried food is not crispy when they come out the device	The bread you are using is excessively moist.	Try using a slightly drier bread and add, if you consider it necessary, a pinch of sugar or butter.
The bread does not adapt well to the shape of the plates	The slice of bread it too big.	Try trimming the slice a little if it does not fit the standard size.

6. TECHNICAL SPECIFICATIONS

Product: Rock nToast Classic +
Product reference: 02963
Power: 700 - 800 W
Voltage and frequency: 220-240 V ~, 50/60 Hz

Technical specifications may change without prior notification to improve product quality.
Made in China | Designed in Spain

7. DISPOSAL OF OLD ELECTRICAL AND ELECTRONIC APPLIANCES



This symbol indicates that, according to the applicable regulations, the product and/or batteries must be disposed of separately from household waste. When this product reaches the end of its shelf life, you should dispose of the cells/batteries/accumulators and take them to a collection point designated by the local authorities.

Consumers must contact their local authorities or retailer for information concerning the correct disposal of old appliances and/or their batteries.

Compliance with the above guidelines will help protecting the environment.

8. TECHNICAL SUPPORT AND WARRANTY

Cecotec shall be liable to the end user or consumer for any lack of conformity that exists at the time of delivery of the product under the terms, conditions, and deadlines established by the applicable regulations.

It is recommended that repairs be carried out by qualified personnel.

If at any moment you detect any problem with your product or have any doubt, do not hesitate to contact the official Cecotec Technical Support Service at +34 963 210 728.

9. COPYRIGHT

The intellectual property rights over the texts in this manual belong to CECOTEC INNOVACIONES, S.L. All rights reserved. The contents of this publication may not, in whole or in part, be reproduced, stored in a retrieval system, transmitted, or distributed by any means (electronic, mechanical, photocopying, recording or similar) without the prior authorization of CECOTEC INNOVACIONES, S.L.

www.cecotec.es

Cecotec Innovaciones S.L.
Av. Reyes Católicos, 60
46910, Alfafar (Valencia), Spain
RP01230630